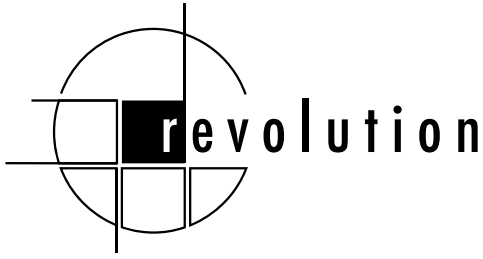


REVOLUTION™ RECEPTION TABLES



20 IN 10 STORAGE

Revolution Reception Tables are incredibly lightweight, remarkably good looking and store unlike any other table (20 tables store in only 10 square feet!!).



20 TABLES / 10 SQUARE FEET

Revolution™ technology is changing the way event managers think about reception tables.



SIZE (IN)	WEIGHT (LBS)	
	SINGLE TABLE	20-UNIT SYSTEM
24" dia.	12	513
30" dia.	14	553
36" dia.	15	613



LIGHTWEIGHT



Traditional Reception tables are extremely heavy, made with a particle or fiber board core, and weighing more than 40 lbs. With patented lightweight technology, a 36" diameter Revolution table weighs only 15 lbs.

TRANSPORT



A single person can move 20 of our new tables packaged in a Revolution cart through a standard doorway (32" clear opening) and even inside a passenger elevator!

GOOD LOOKS



With your choice of Formica® laminate finishes plus a rich-looking 30mm profile and PS Furniture's MAXX Edge®, Revolution tables never need to be covered.

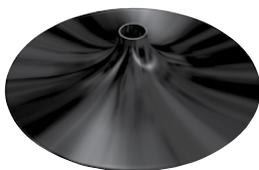
CUSTOM LOGOS



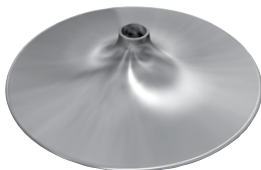
We now offer a Custom Logo Laminate surface on our Revolution™ Reception Tables. Add amazing aesthetics to your space while promoting school or business pride!

*The logo design pictured above is not for sale and cannot be purchased through PS Furniture.

BASE CHOICES*



black trumpet



chrome trumpet



black x-base



brushed x-base

*Rollers base also available. See page 8 for details. See laminate choices on page 49.